

*The heart of your press*



[WWW.PAMARCOGLOBAL.COM](http://WWW.PAMARCOGLOBAL.COM)

Pamarco Global Graphics

11103 Indian Trail  
Dallas, Tx 75229

Tel: (972) 484-6808  
Fax: (972) 484-6510

[sales.sentinel@pamarcoglobal.com](mailto:sales.sentinel@pamarcoglobal.com)

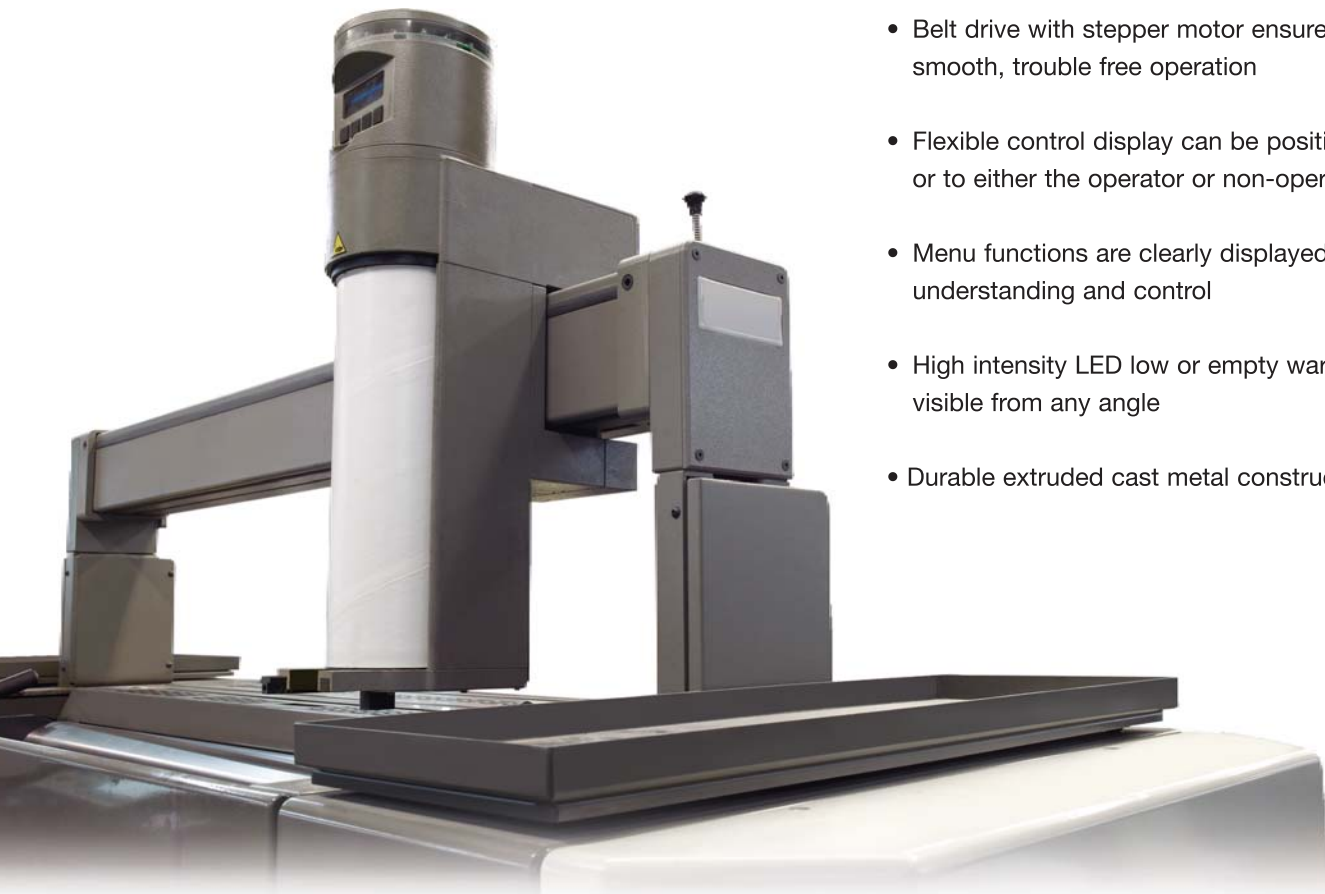


**SENTINEL Pro**  
INK MANAGEMENT SYSTEM  
PATENTED

# SENTINEL Pro

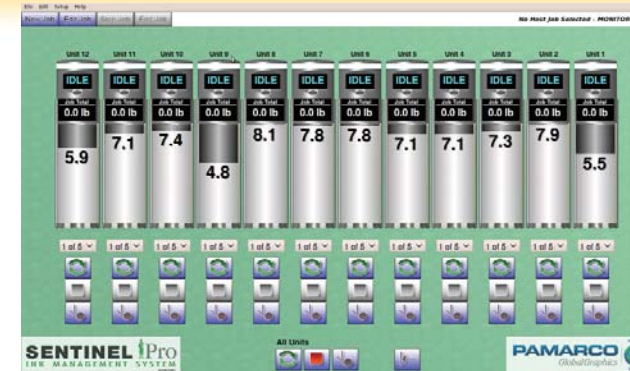
INK MANAGEMENT SYSTEM  
PATENTED

The Sentinel Ink Management System is constructed and tested to provide smooth, trouble-free operation. The Sentinel has been manufactured to withstand the demanding conditions of seven day per week/twenty-four hour per day usage – even when using UV inks and harsh press washes.



- New design to maximize ink fountain coverage, while integrating visually with existing equipment
- Sealed linear actuator provides clean low maintenance environment
- Flash programmable micro-controller allows updates without changing components in the dispensing head
- Belt drive with stepper motor ensures years of smooth, trouble free operation
- Flexible control display can be positioned to face forward, or to either the operator or non-operator side of the press
- Menu functions are clearly displayed for easy understanding and control
- High intensity LED low or empty warning lights are visible from any angle
- Durable extruded cast metal construction

Accepts the following cartridges!



### MONITORING & FUNCTION FEATURES

- Displays cartridge status, including low and empty alerts
- Provides precise ink usage totals for all Sentinel units
- Controls individual or multiple Sentinel unit operation; auto run, stop, plow (agitate) mode and ink fountain level setting
- Enables filling of the fountains from the console

### CENTRAL CONTROL CONSOLE

The optional Central Control Console completes the Sentinel Ink Management package with monitoring and function control right at the operator's fingertips. The console tracks usage and remaining ink in the cartridge, provides real time information and an end of job report feature.



### JOB RECORDING FEATURES

- Job entry fields allow tracking of each individual job and saving job totals for future reference
- Set specific gravity or weight of ink for exact ink usage on all units
- Print end of job reports for estimating repeat runs



### OPTIONAL PLOW / AGITATOR

- For use with heavy bodied or UV inks
- Eliminates the need for ink agitators
- Robust design resists flexing
- Nylon tips prevent damage to the ink blade or ink fountain roller
- Fully adjustable to fit any ink fountain



### Benefits

- **Ink savings of 15-20%**
- **Save on waste ink disposal costs**  
Protect our environment.
- **Reduce potential injuries**  
Can occur due to repetitive motions throughout the work day (Ink knifing).
- **Ensure color consistency**  
Save waste and re-runs due to running out of ink in fountains or spikes in color density when adding ink.
- **Ink data reporting**  
Know exactly how much ink was used on a particular job, track voc's.
- **Increased press productivity**  
Increase your billable hours each day with faster make-ready.
- **Reduction in man hours**  
Drastically reduce time spent on filling, monitoring, and cleaning ink fountains.
- **Reduction in hickeys**
- **Eliminate ink agitators**

### Summary of Yearly Savings

This summary is based on a 6 color 40" press equipped with the Sentinel Ink Management System.\*

Savings	
Ink Savings	\$ 18,290.30
Reduced Disposal Costs	\$ 1,828.17
Increased Press Production	\$ 43,875.00
<b>Total Savings</b>	<b>\$ 63,993.47</b>
Cost of Sentinel System	\$ 50,430.00
Return on Investment	9.5 months
<b>Average Monthly Saving</b>	<b>\$ 5,332.79</b>

Additional Benefits: **1,065** Man Hours Saved (eliminated time of maintaining fountains; filling, monitoring, replenishing and clean-up).

\*Running 3 shifts, 5 days a week. This is an illustration only. Please ask for a detailed summary or an estimate based on your equipment.